



**India Meteorological Department  
(Ministry of Earth Sciences)**

**BULLETIN NO. 26 (ARB/01/2023)**

**TIME OF ISSUE: 1545 HOURS IST** **DATED: 09.06.2023**  
**FROM: INDIA METEOROLOGICAL DEPARTMENT (FAX NO. 24643965/24699216/24623220)**

**TO: CONTROL ROOM, NDM, MINISTRY OF HOME AFFAIRS (FAX.NO. 23093750)**  
**CONTROL ROOM NDMA (FAX.NO. 26701729)**  
**CABINET SECRETARIAT (FAX.NO.23012284, 23018638)**  
**PS TO HON'BLE MINISTER FOR S & T AND EARTH SCIENCES (FAX NO.23316745)**  
**SECRETARY, MOES (FAX NO. 24629777)**  
**H.Q. (INTEGRATED DEFENCE STAFF AND CDS) (FAX NO. 23005137/23005147)**  
**DIRECTOR GENERAL, DOORDARSHAN (23385843)**  
**DIRECTOR GENERAL, AIR (23421105, 23421219)**  
**PIB MOES (FAX NO. 23389042)**  
**UNI (FAX NO. 23355841)**  
**D.G. NATIONAL DISASTER RESPONSE FORCE (NDRF) (FAX NO. 26105912, 2436 3260)**  
**DIRECTOR, PUNCTUALITY, INDIAN RAILWAYS (FAX NO. 23388503)**  
**CHIEF SECRETARY, KERALA (FAX NO. 0471-2327176)**  
**ADMINISTRATOR, LAKSHADWEEP ISLANDS (FAX NO. 0413-262184)**  
**CHIEF SECRETARY, TAMILNADU (FAX NO. 044-25672304)**  
**CHIEF SECRETARY, GOA (FAX NO. 0832-2415201)**  
**CHIEF SECRETARY, KARNATAKA (FAX NO. 080-22258913)**  
**CHIEF SECRETARY, MAHARASHTRA (FAX NO. 022- 22028594)**  
**CHIEF SECRETARY, GUJARAT (FAX NO. 079-23250305)**  
**CHIEF SECRETARY, DAMAN & DIU (FAX NO. 0260-2230775)**  
**CHIEF SECRETARY, DADRA & NAGAR HAVELI (FAX NO. 0260-2645466)**

**Sub: A) Very Severe Cyclonic Storm "Biparjoy" (pronounced as "Biporjoy") over eastcentral Arabian Sea**  
**B) Well Marked Low Pressure Area over northeast Bay of Bengal**

**A) Very Severe Cyclonic Storm "Biparjoy" (pronounced as "Biporjoy") over eastcentral Arabian Sea**

The very severe cyclonic storm "Biparjoy" (pronounced as "Biporjoy") over eastcentral Arabian Sea moved east-northeastwards with a speed of 8 kmph during past 6-hours and lay centered at 1130 hours IST of today, the 09th June, 2023 over the same region near latitude 15.0°N and longitude 66.6°E, about 780 km west of Goa, 790 km west-southwest of Mumbai, 810 km south-southwest of Porbandar and 1100 km south of Karachi.

It would intensify further gradually during next 36 hours and move nearly north-northeastwards during next 48 hours and north-northwestwards during subsequent 3 days.

**Forecast track and intensity are given below:**

<b>Date/Time(IST)</b>	<b>Position (Lat. °N/ long. °E)</b>	<b>Maximum sustained surface wind speed (Kmph)</b>	<b>Category of cyclonic disturbance</b>
09.06.23/1130	15.0/66.6	125-135 gusting to 150	Very Severe Cyclonic Storm
09.06.23/1730	15.3/66.9	130-140 gusting to 155	Very Severe Cyclonic Storm
09.06.23/2330	15.7/67.0	135-145 gusting to 160	Very Severe Cyclonic Storm
10.06.23/0530	16.1/67.0	140-150 gusting to 165	Very Severe Cyclonic Storm
10.06.23/1130	16.4/67.0	140-150 gusting to 165	Very Severe Cyclonic Storm
10.06.23/2330	17.2/67.0	145-155 gusting to 170	Very Severe Cyclonic Storm
11.06.23/1130	17.9/66.9	140-150 gusting to 165	Very Severe Cyclonic Storm
11.06.23/2330	18.6/66.8	135-145 gusting to 160	Very Severe Cyclonic Storm
12.06.23/1130	19.3/66.7	130-140 gusting to 155	Very Severe Cyclonic Storm
12.06.23/2330	20.0/66.5	125-135 gusting to 150	Very Severe Cyclonic Storm
13.06.23/1130	20.7/66.2	120-130 gusting to 145	Very Severe Cyclonic Storm
13.06.23/2330	21.4/65.9	115-125 gusting to 140	Very Severe Cyclonic Storm
14.06.23/1130	22.0/65.6	110-120 gusting to 135	Severe Cyclonic Storm

**(i) Wind warning:**

**9<sup>th</sup> June:** Gale wind speed reaching 125-135 kmph gusting to 160 kmph is likely to prevail over eastcentral Arabian Sea and adjoining areas of westcentral Arabian Sea and become 145-155 kmph gusting to 170 kmph over the region from night.

Squally wind speed reaching 50-60 kmph gusting to 70 kmph is likely over adjoining areas of South Arabian Sea.

**10<sup>th</sup> June:** Gale wind speed reaching 145-155 kmph gusting to 170 kmph is likely to prevail over eastcentral & adjoining areas of westcentral Arabian Sea and 70-80 kmph gusting to 90 kmph likely to prevail over adjoining areas of northeast Arabian Sea.

**11<sup>th</sup> June:** Gale wind speed reaching 135-145 kmph gusting to 160 kmph is likely to prevail over eastcentral & adjoining westcentral Arabian Sea and becoming 130-140 kmph gusting to 155 kmph over the region from evening.

**12<sup>th</sup> June:** Gale wind speed reaching 125-135 kmph gusting to 150 kmph is likely to prevail over northeast and adjoining central & northwest Arabian Sea and becoming 120-130 kmph gusting to 145 kmph from evening.

**13<sup>th</sup> June:** Gale wind speed reaching 115-125 kmph gusting to 140 kmph is likely to prevail over northeast and adjoining central & northwest Arabian Sea.

**14<sup>th</sup> June:** Gale wind speed reaching 115-125 kmph gusting to 140 kmph is likely to prevail over central parts of north Arabian Sea and 70-80 kmph gusting to 90 kmph over adjoining areas of central Arabian Sea.

**Along & off Saurashtra & Kutch coasts:**

Squally wind speed reaching 35-45 kmph gusting to 55 kmph is likely to prevail on 10<sup>th</sup> June and likely to increase becoming 40-50 kmph gusting to 60 kmph on 11<sup>th</sup> June, 45-55 kmph gusting to 65 kmph during 12<sup>th</sup> and 50-60 kmph gusting to 70 kmph 13<sup>th</sup> and 14<sup>th</sup> June.

**(ii) Sea condition**

**9<sup>th</sup> & 10<sup>th</sup> June:** Sea condition is likely to be phenomenal over eastcentral Arabian Sea and adjoining areas of westcentral Arabian Sea. Rough to very rough sea condition is likely to prevail over adjoining areas of south Arabian Sea.

**11<sup>th</sup> June:** Sea condition is likely to be phenomenal over northeast and adjoining central & northwest Arabian Sea.

**12<sup>th</sup> & 13<sup>th</sup> June:** Sea condition is likely to be phenomenal over northeast and adjoining northeast and adjoining central & northwest Arabian Sea.

**14<sup>th</sup> June:** Sea condition is likely to be phenomenal to very high over central parts of north Arabian Sea. Rough to very rough sea condition is likely over adjoining areas of central Arabian Sea.

**Along & off Saurashtra & Kutch coasts:**

Sea condition is likely to be rough on 10<sup>th</sup> June and likely to become rough to very rough during 11<sup>th</sup> to 14<sup>th</sup> June.

**(iii) Fishermen Warning (Graphics Attached)**

- Total suspension of fishing operations over
  - eastcentral and adjoining westcentral Arabian Sea till 13<sup>th</sup> June.
  - north and adjoining central Arabian Sea during 12<sup>th</sup> -14<sup>th</sup> June
- Fishermen are advised not to venture into:
  - Central Arabian Sea till 13<sup>th</sup> June.
  - North Arabian Sea during 12<sup>th</sup> -15<sup>th</sup> June.
  - **Along & off Saurashtra & Kutch coasts during 10<sup>th</sup> to 15<sup>th</sup> June.**
- Those out at sea are advised to return to coast.

**B) Well Marked Low Pressure Area over northeast Bay of Bengal**

The low pressure over the northeast Bay of Bengal off Myanmar coast lay as a well marked low pressure area over northeast Bay of Bengal at 1130 hours IST of today, the 9<sup>th</sup> June, 2023.

**(i) Wind warning:**

Squally weather with wind speed reaching 35-45 kmph gusting to 55 kmph is likely to prevail over northeast Bay of Bengal during 9<sup>th</sup> and 10<sup>th</sup> June.

**(ii) Sea condition**

Sea condition is likely to be rough over northeast Bay of Bengal on 9<sup>th</sup> and 10<sup>th</sup> June.

**(iii) Fishermen Warning (Graphics Attached)**

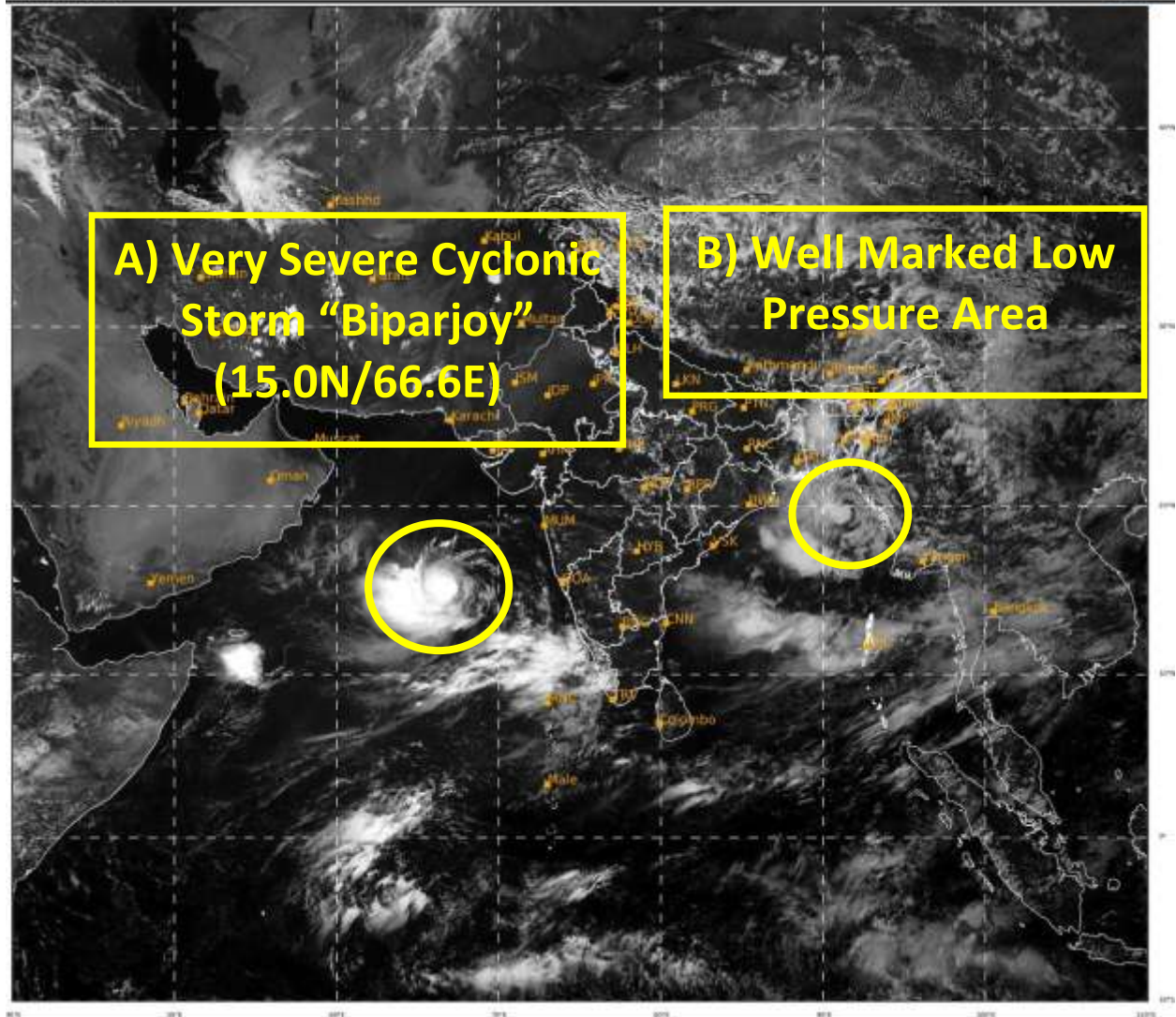
Fishermen are advised not to venture into northeast Bay of Bengal on 9<sup>th</sup> and 10<sup>th</sup> June.

**The systems are under continuous surveillance and the next message will be issued at 1730 hours IST of today, the 9<sup>th</sup> June, 2023.**

**(Ananda Kumar Das)**  
**Scientist F, Cyclone Warning Division, New Delhi**

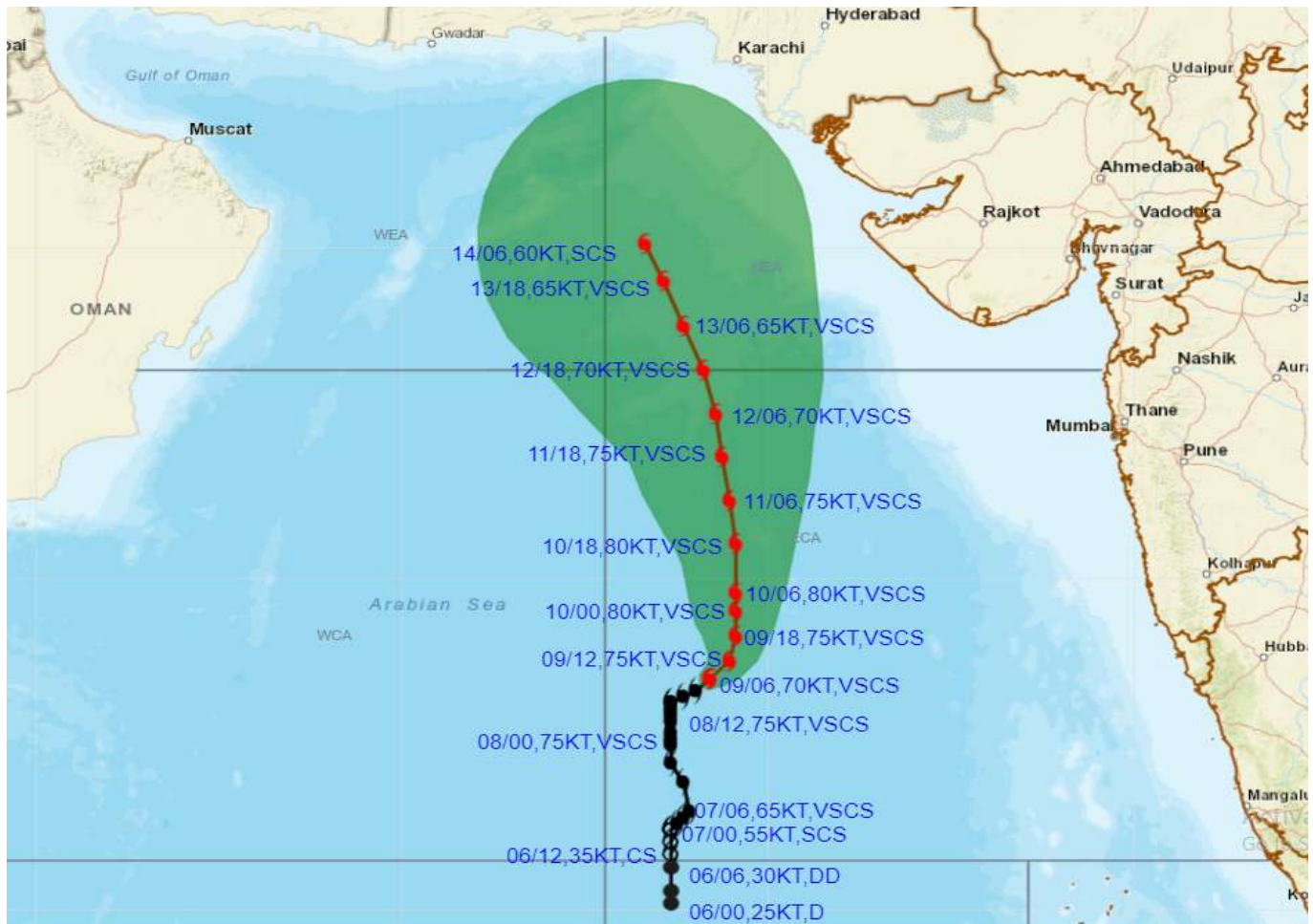
*Copy to: ACWC Kolkata/ ACWC Chennai/ CWC Bhubaneswar/CWCVisakhapatnam/CWC Ahmedabad/ MO Port Blair/MC Raipur/MC Bhopal/MC Hyderabad/RMC Nagpur*

**LEGEND: Heavy Rainfall:** 64.5 to 115.5mm, **Very Heavy Rainfall:** 115.6 to 204.4mm **Most Places:** more than 76% of total stations, **Isolated Places:** Less than 25% of total





**OBSERVED AND FORECAST TRACK ALONGWITH CONE OF UNCERTAINTY OF VERY SEVERE CYCLONIC STORM "BIPARJOY" OVER EASTCENTRAL ARABIAN SEA BASED ON 0600 UTC (1130 IST) OF 09<sup>TH</sup> JUNE 2023.**



**DATE/TIME IN UTC**

**IST=UTC + 0530**

**L: LOW PRESSURE AREA**

**WML: WELL MARKED LOW PRESSURE AREA**

**D: DEPRESSION (17-27 KT)**

**DD: DEEP DEPRESSION (28-33 KT)**

**CS: CYCLONIC STORM (34-47 KT)**

**SCS: SEVERE CYCLONIC STORM (48-63KT)**

**VSCS: VERY SEVERE CYCLONIC STORM (64-89 KT)**

**ESCS: EXTREMELY SEVERE CYCLONIC STORM (90-119 KT)**

**SuCS: SUPER CYCLONIC STORM ( $\geq 120$  KT)**

**LESS THAN 34 KT**

**34-47 KT**

**$\geq 48$  KT**

**OBSERVED TRACK**

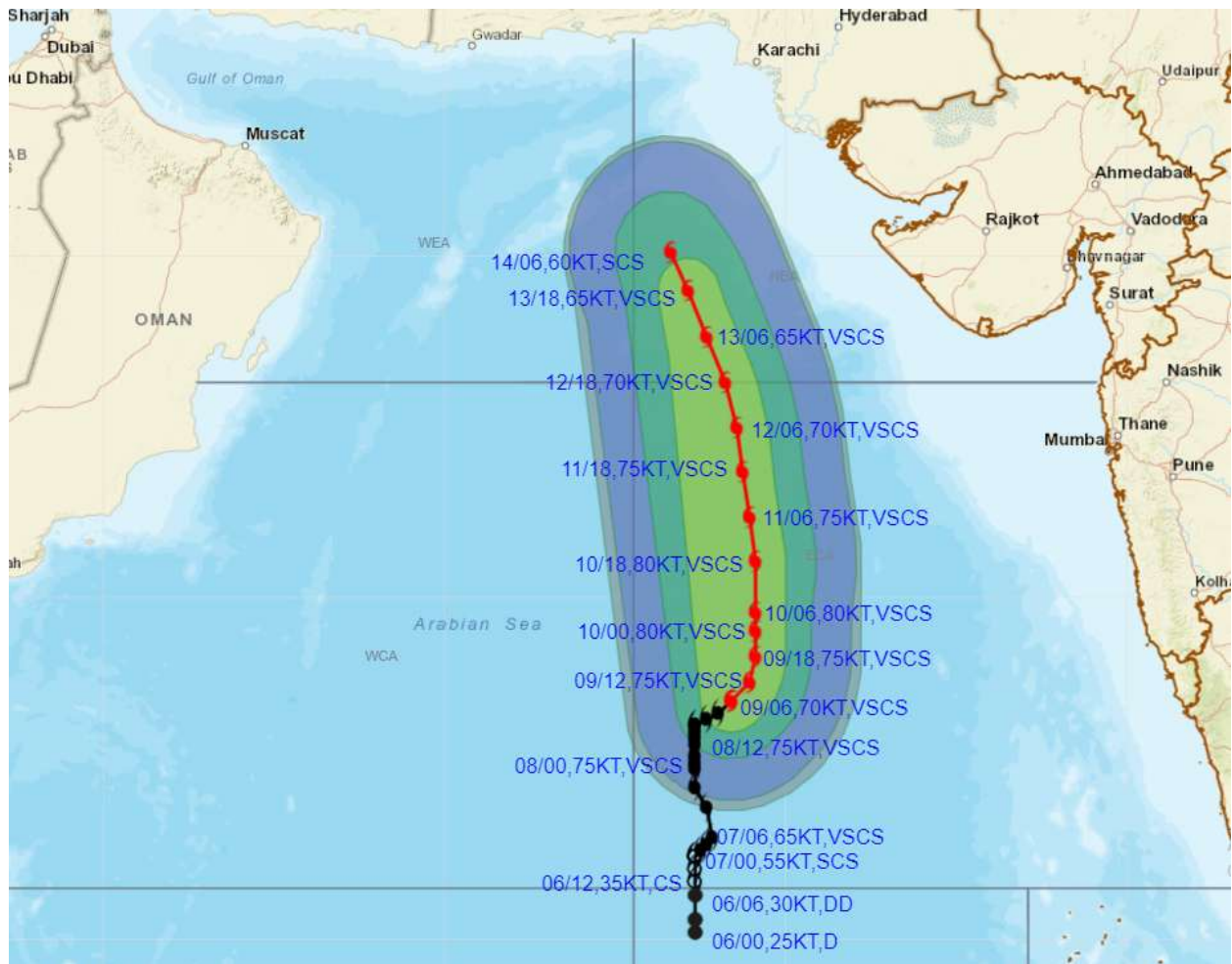
**FORECAST TRACK**

**CONE OF UNCERTAINTY**

Forecast	DISTANCE(KM) AND DIRECTION FROM STATIONS					
	DATE AND TIME	PORBANDAR	BOMBAY / COLABA	GOA/PANJIM	KARACHI AIRPORT	MASIRAH
	10.06.23/0000	690, SSW	700, WSW	750, W	990, S	990, ESE
	11.06.23/0000	520, SSW	630, WSW	770, WNW	800, S	910, ESE
	12.06.23/0000	400, SW	650, W	870, WNW	620, S	820, E
	13.06.23/0000	400, WSW	750, WNW	1020, NW	470, SSW	730, E
	14.06.23/0000	470, W	880, WNW	1180, NW	360, SW	660, ENE



**OBSERVED AND FORECAST TRACK ALONGWITH QUADRANT WIND DISTRIBUTION OF VERY SEVERE CYCLONIC STORM "BIPARJOY" OVER EASTCENTRAL ARABIAN SEA BASED ON 0600 UTC (1130 IST) OF 09TH JUNE 2023.**



**DATE/TIME IN UTC**

IST=UTC + 0530

L: LOW PRESSURE AREA

WML: WELL MARKED LOW PRESSURE AREA

D: DEPRESSION (17-27 KT)

DD: DEEP DEPRESSION (28-33 KT)

CS: CYCLONIC STORM (34-47 KT)

SCS: SEVERE CYCLONIC STORM (48-63KT)

VSCS: VERY SEVERE CYCLONIC STORM (64-89 KT)

ESCS: EXTREMELY SEVERE CYCLONIC STORM (90-119 KT)

SuCS: SUPER CYCLONIC STORM ( $\geq$  120 KT)

● LESS THAN 34 KT

○ 34-47 KT

●  $\geq$  48 KT

— OBSERVED TRACK

— FORECAST TRACK

— CONE OF UNCERTAINTY

AREA OF MAXIMUM SUSTAINED WIND SPEED:

— 28-33 KT (52-61 KMPH)

— 34-49 KT (62-91 KMPH)

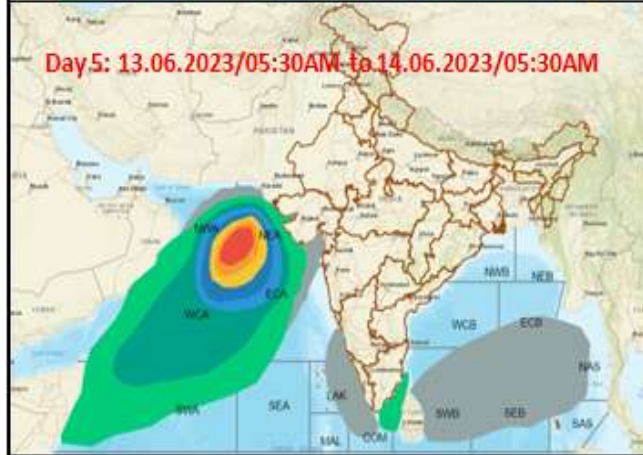
— 50-63 KT (92-117 KMPH)

—  $\geq$  64 KT ( $\geq$ 118 KMPH)

**IMPACT OVER THE SEA**

MSW (knot/kmph)	Impact	Action
28-33 (52-61)	Very rough seas	Total suspension of fishing operations
34-49 (62-91)	High to very high seas	Total suspension of fishing operations
50-63 (92-117)	Very high seas	Total suspension of fishing operations
$\geq$ 64 ( $\geq$ 118)	Phenomenal	Total suspension of fishing operations

## Fishermen warning graphics



	Squally Weather with wind speed 40-45 kmph gusting to 55 kmph
	Squally wind speed with wind speed 45-55 kmph gusting to 65 kmph
	Gale wind speed with wind speed 60-70 kmph gusting to 80 kmph
	Gale wind speed with wind speed 70-80 kmph gusting to 90 kmph
	Gale wind speed with wind speed 80-90 kmph gusting to 100 kmph
	Gale wind speed with wind speed 90-100 kmph gusting to 120 kmph
	Gale wind speed with wind speed 100-120 kmph gusting to 135 kmph
	Gale wind speed with wind speed 120-140 kmph gusting to 155 kmph
	Gale wind speed with wind speed 140-160 kmph gusting to 175 kmph

**Fishermen are advised not to venture into the marked areas.**